



Virginia Woolf, 17
25005, Lleida (Spain)

INTERNATIONAL +34 873 450 709
das@dynamicabutment.com

USA +34 873 450 707
usa@dynamicabutment.com

SPAIN +34 973 289 580
spain@dynamicabutment.com

Dynamic Abutment Solutions is the trademark of the manufacturer Talladium España S.L. The information included in this catalogue is exclusively addressed to professionals in dental sector.

All commercial trademarks mentioned herein are fully registered by their respective companies, and the images that appear are just to provide an orientation. Talladium reserves the right to modify this document without previous notice. Talladium is not responsible for the inadequate execution of these products if the warning indications corresponding to every reference are not contemplated.

Ask about the products available with CE legislation. Some of the products are not authorized for sale and distribution or do not have a sales license in some countries according to other legislations.

Information: das@dynamicabutment.com.



GUIDED DAS SURGICAL | KIT

This manual is aimed exclusively at clinical professionals. The manual, including all images and logos, is protected by copyright. Any use which violates copyright is prohibited and punishable unless authorized in writing by Dynamic Abutment Solutions.

The DAS Guided Surgical Kit has been designed for use in the placement of all implant systems according to the drills and lengths included in the Kit.

This is the most versatile guided surgical kit on the market. The Kit includes guided surgical drills, dedicated drivers, and mounting devices for guided surgery. All the components are organized in order to make the workflow easier.

INDEX

| | |
|----|--|
| 7 | ADVANTAGES |
| 8 | DAS SURGICAL GUIDE WORKFLOW |
| 10 | DAS SURGICAL GUIDE KIT |
| 19 | DAS SURGICAL GUIDE COMPONENTS |
| 20 | ANCHOR DRILL AND PIN |
| 22 | DRILLS |
| 24 | SLEEVES |
| 26 | IMPLANT MOUNTERS |
| 30 | 100% GUIDED SURGERY PROCESS |
| 32 | DRILL SEQUENCE EXAMPLE |
| 34 | SAME CONNECTION, DIFFERENT IMPLANT MOUNTER |
| 36 | EXTENSORS |
| 37 | SCREWDRIVER & EXTRACTOR |
| 38 | LIBRARIES |





Universal Kit

For all implant systems
(max. Ø 4,7mm)



100% guided drill system



Only one DAS Sleeve



Guided implant mounts per
connection and prosthetic
platform



Drill up to 19mm



Multiple options between
implant and mounts



The design of the different offsets
allows an optimal implant and
sleeve placement



All calculations and measurements
before surgery



Minimally invasive



Can save bone augmentation and
sinus lift



Surgery takes less time



Abutments and healing caps
planned

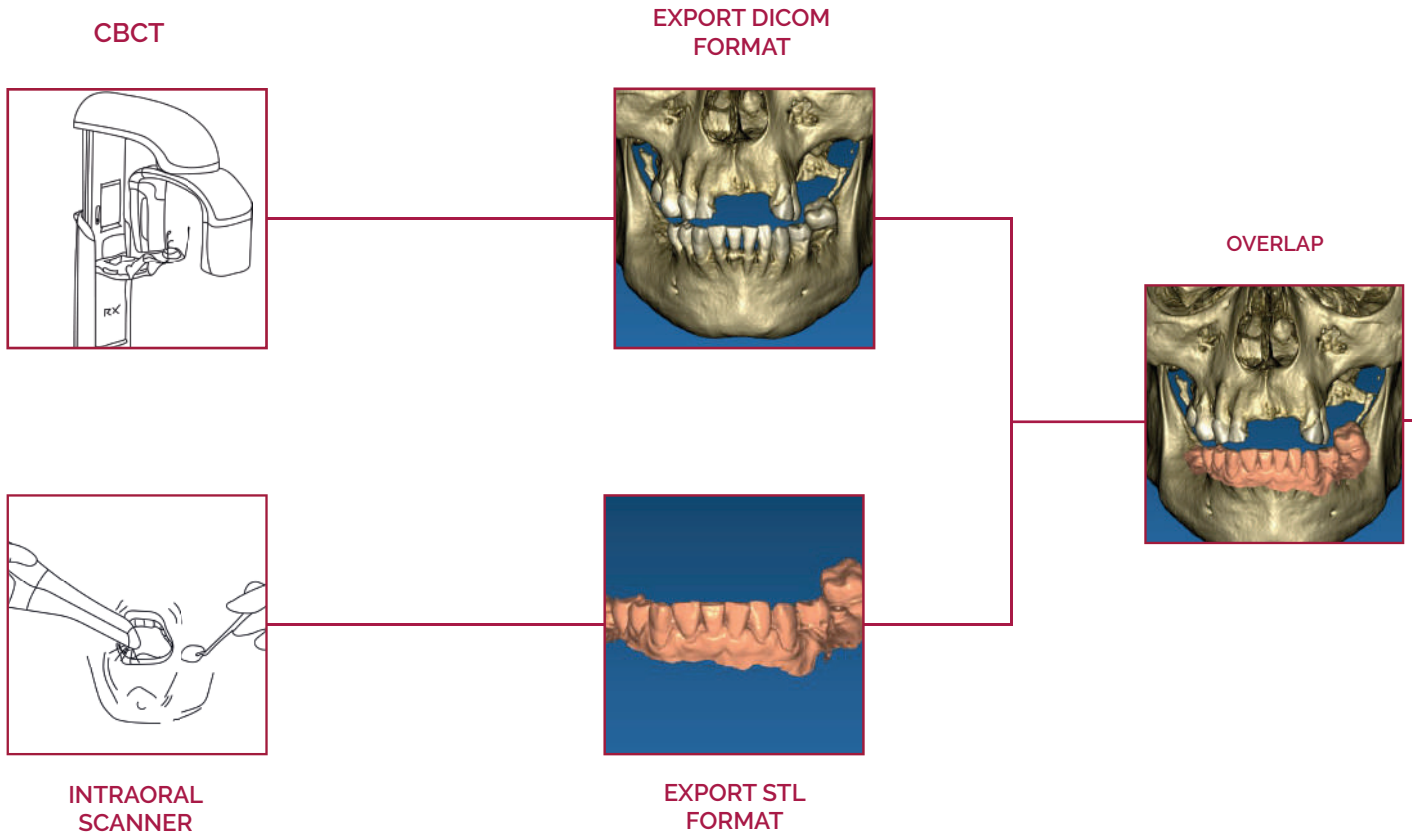


Maximum accuracy



Full guided workflow relating
to Dynamic TiBase
and Multi-Unit DAS System

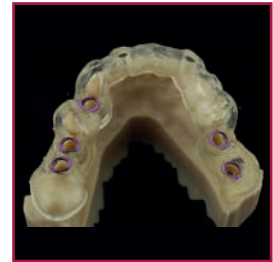
WORKFLOW



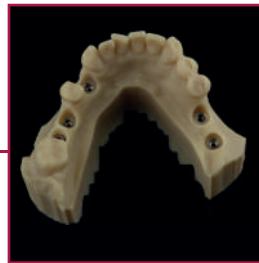
LABORATORY
PROSTHETIC
DAS COMPONENTS



IMPLANT
PLANNING



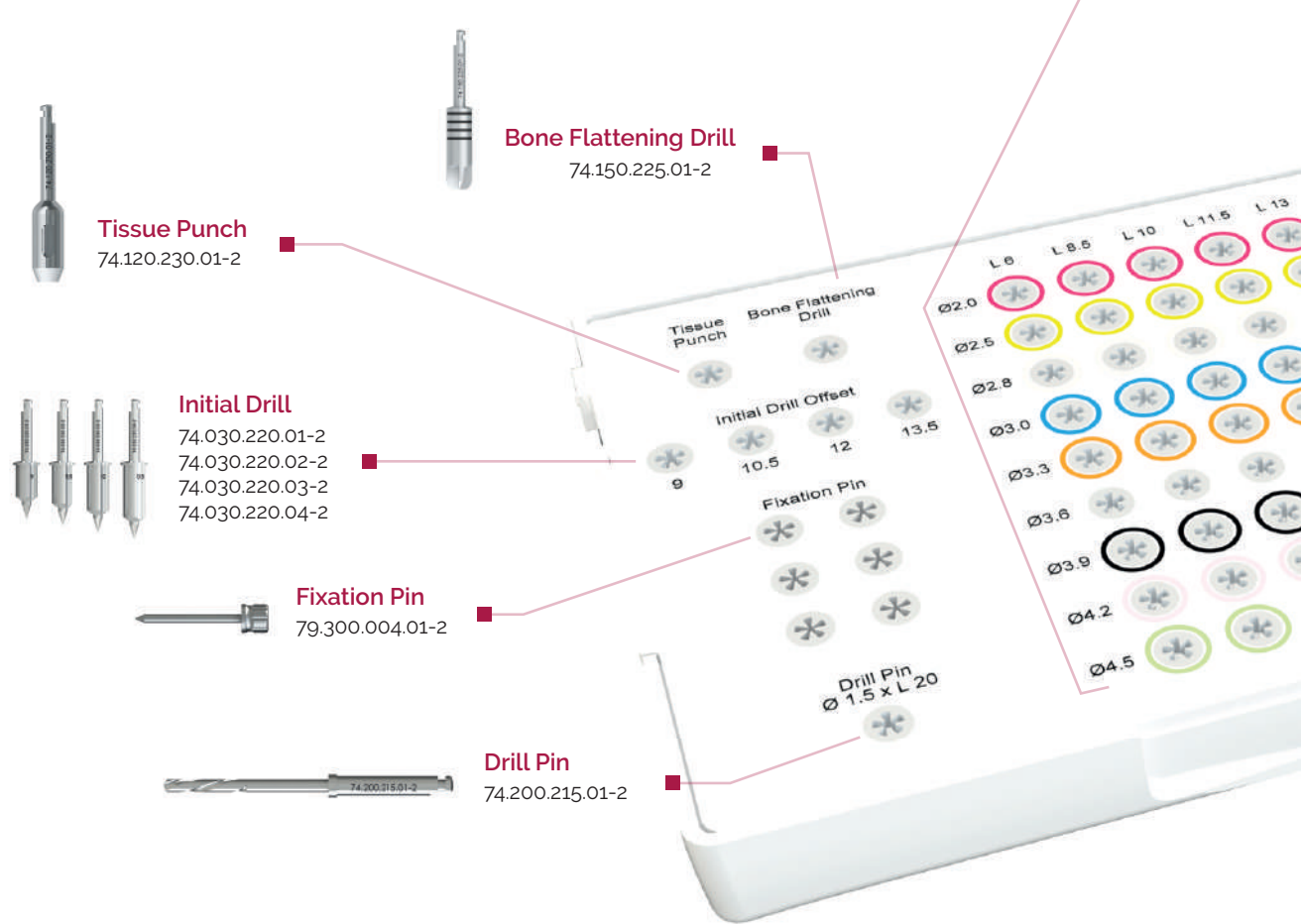
SURGICAL GUIDE

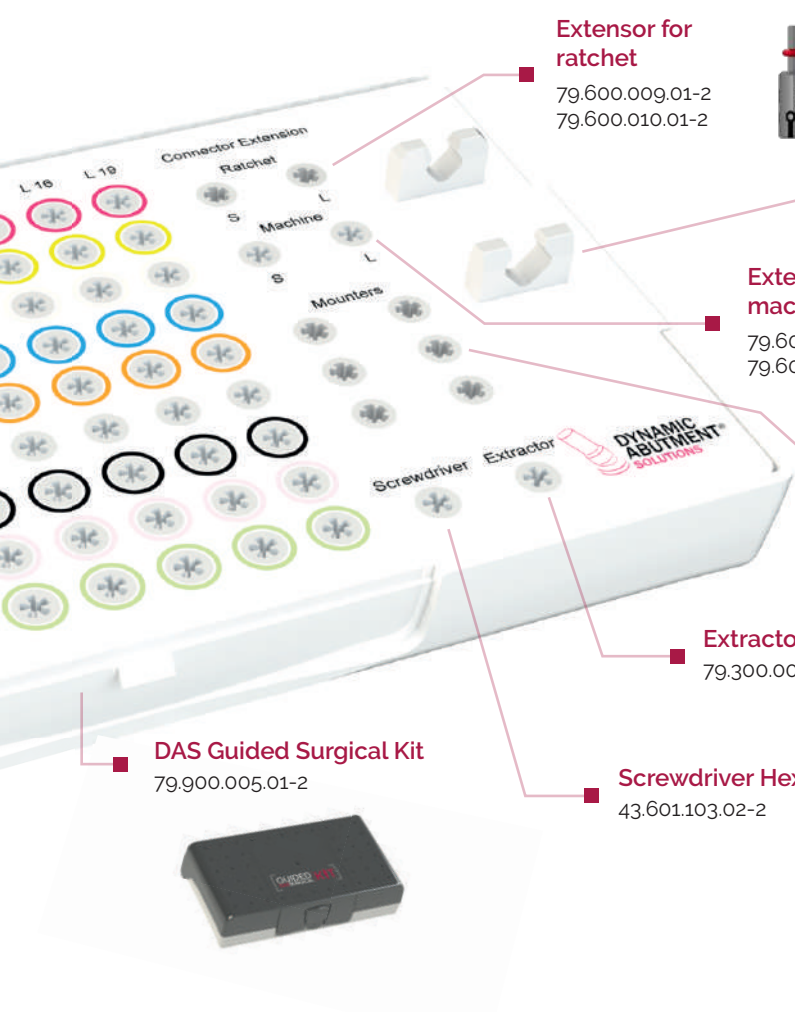
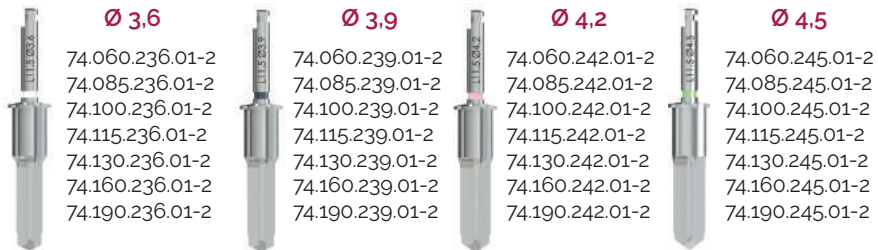


3D PRINTED MODEL

DAS SURGICAL GUIDE KIT

| Ø 2,0 | Ø 2,5 | Ø 2,8 | Ø 3,0 | Ø 3,3 |
|-----------------|-----------------|-----------------|-----------------|-----------------|
| 74.060.220.01-2 | 74.060.225.01-2 | 74.060.228.01-2 | 74.060.230.01-2 | 74.060.233.01-2 |
| 74.085.220.01-2 | 74.085.225.01-2 | 74.085.228.01-2 | 74.085.230.01-2 | 74.085.233.01-2 |
| 74.100.220.01-2 | 74.100.225.01-2 | 74.100.228.01-2 | 74.100.230.01-2 | 74.100.233.01-2 |
| 74.115.220.01-2 | 74.115.225.01-2 | 74.115.228.01-2 | 74.115.230.01-2 | 74.115.233.01-2 |
| 74.130.220.01-2 | 74.130.225.01-2 | 74.130.228.01-2 | 74.130.230.01-2 | 74.130.233.01-2 |
| 74.160.220.01-2 | 74.160.225.01-2 | 74.160.228.01-2 | 74.160.230.01-2 | 74.160.233.01-2 |
| 74.190.220.01-2 | 74.190.225.01-2 | 74.190.228.01-2 | 74.190.230.01-2 | 74.190.233.01-2 |





Extensor for ratchet

79.600.009.01-2
79.600.010.01-2



Universal manual torque wrench
11.990.990.07-2

Extensor for machine

79.600.007.01-2
79.600.008.01-2



Implant Mounters

75.xxx.xxx.48-2*



*Depending on compatibility

Extractor

79.300.001.02-2



Screwdriver Hex. 1,2

43.601.103.02-2



DAS Guided Surgical Kit

79.900.005.01-2



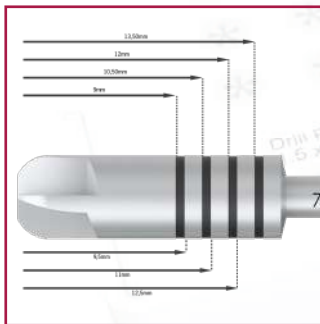


Tissue Punch

74.120.230.01-2

The tissue punch is used to make a minimally **invasive circular** incision in the soft tissue around each planned implant position. This tool creates a 3 mm diameter mucotomy prior to the passage of drills when using a flapless surgical technique.

It is a single punch guided directly by the **guide sleeve**. In case of little keratinized gingival tissue, it is not recommended to use the tissue punch but to make a flap in line with the implant position.



Black stripes indicate the offset.



Bone Flattening Drill

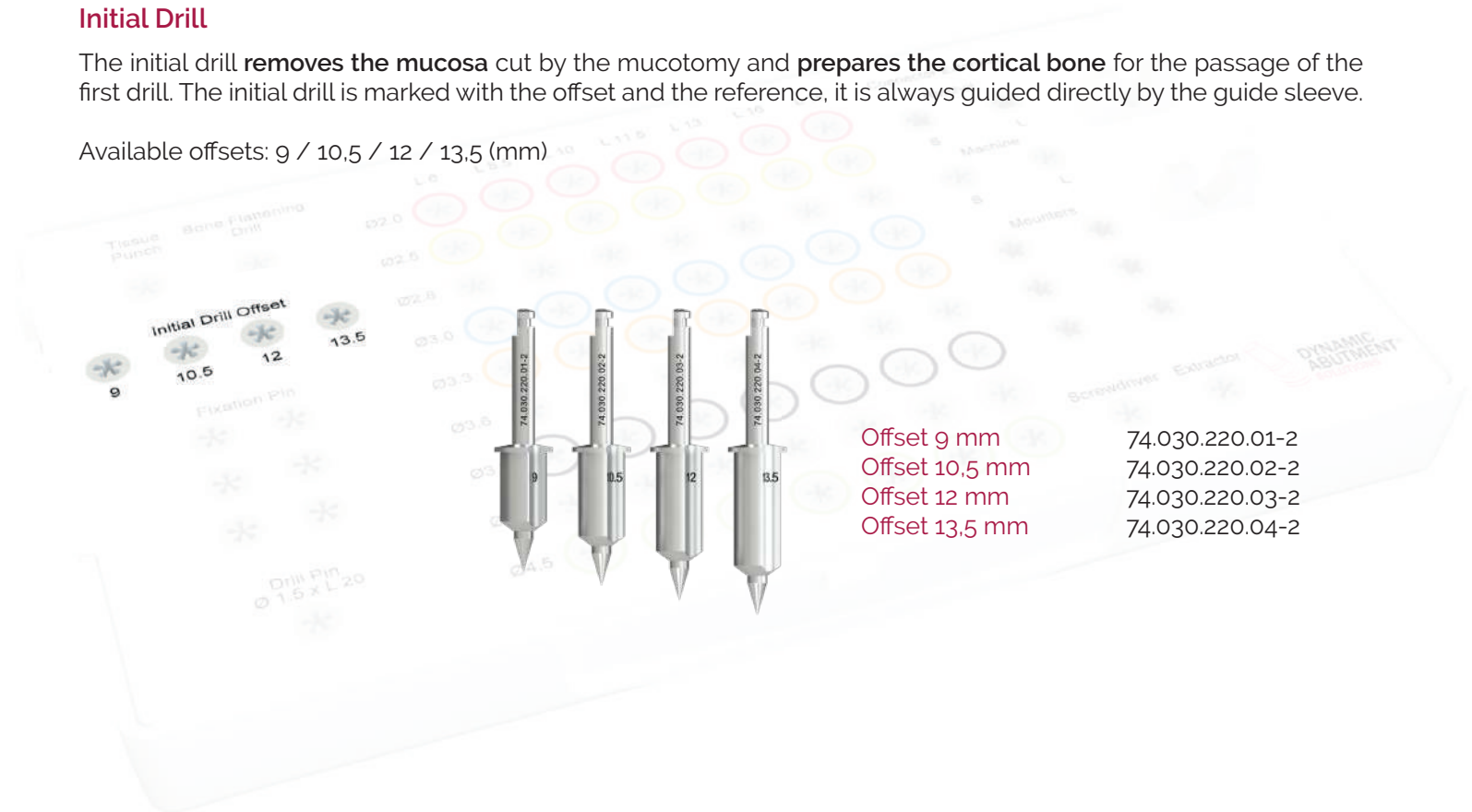
74.150.225.01-2

The bone flattening Drill is used to flatten the surface of the **alveolar crest**, and the remaining soft tissue on the alveolar crest is removed after using the tissue punch.

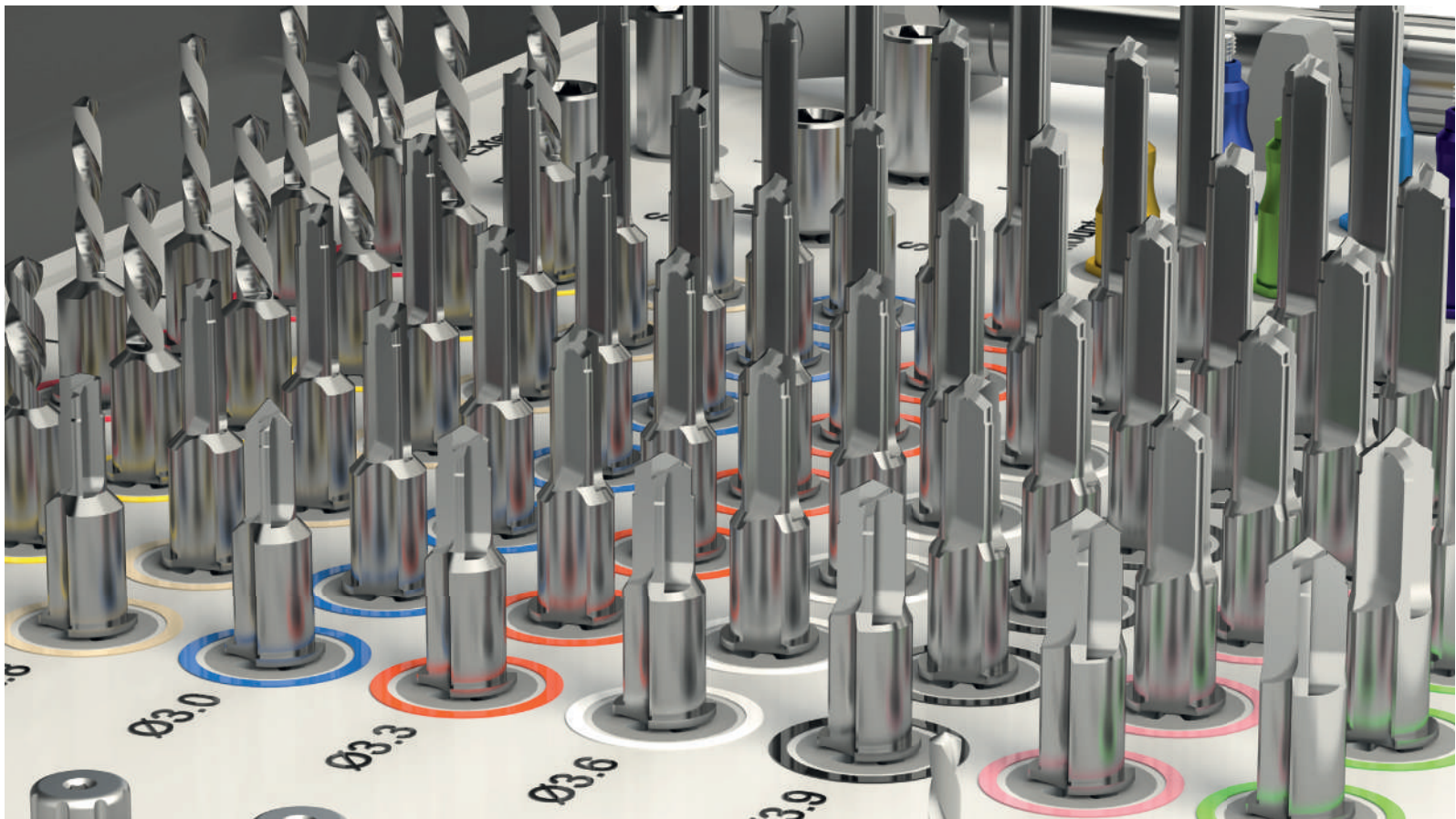
Initial Drill

The initial drill **removes the mucosa** cut by the mucotomy and **prepares the cortical bone** for the passage of the first drill. The initial drill is marked with the offset and the reference, it is always guided directly by the guide sleeve.

Available offsets: 9 / 10,5 / 12 / 13,5 (mm)



- Offset 9 mm 74.030.220.01-2
- Offset 10,5 mm 74.030.220.02-2
- Offset 12 mm 74.030.220.03-2
- Offset 13,5 mm 74.030.220.04-2



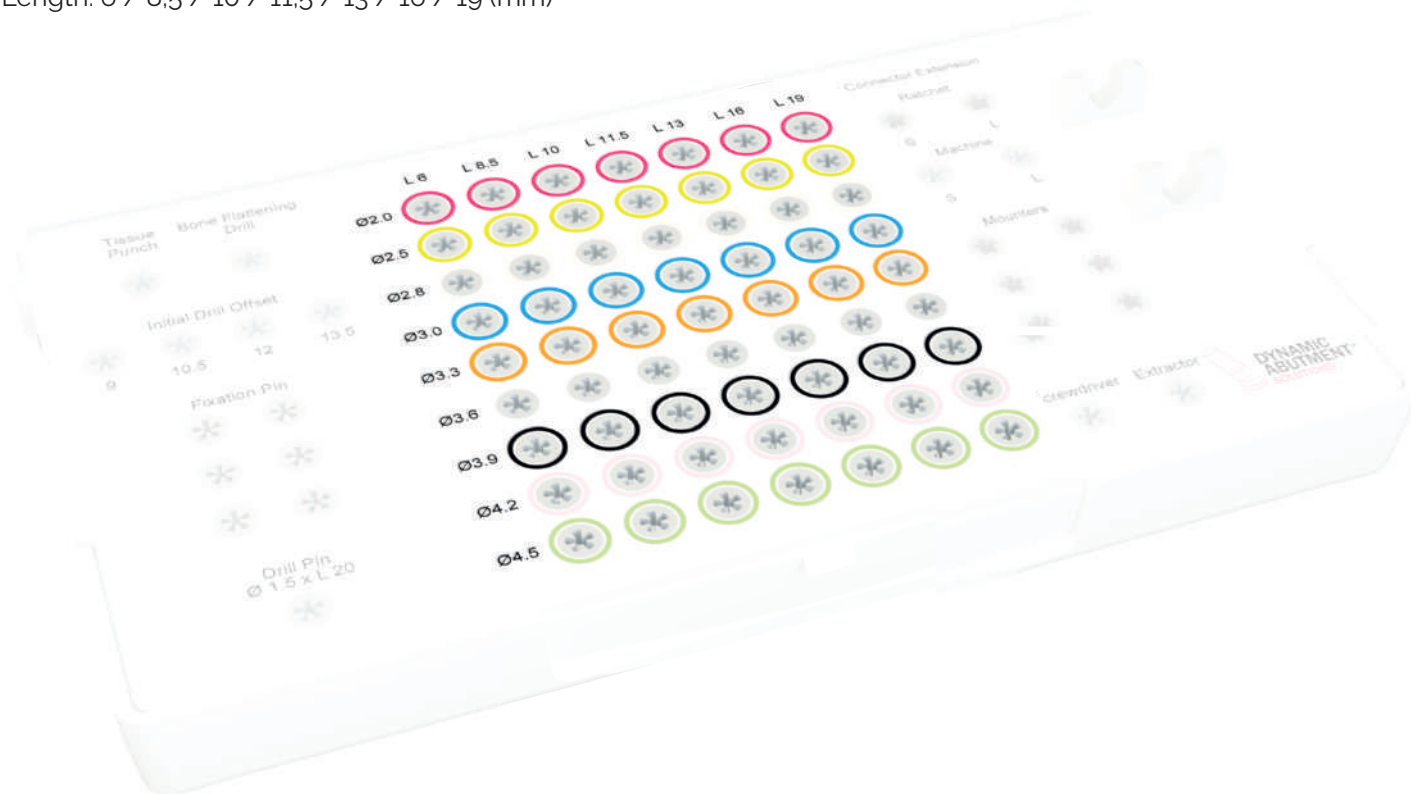
Drills

Built-in stoppers ensure precise and accurate drilling to the desired depth. **The different drills diameters and lengths** allow doctors to plan and decide which is the best solution before starting surgery.

The DAS Surgical Guided Kit is intuitive, easy and effortless, allowing logic and simple procedures. It is necessary to **check our catalogue** for the compatibilities and implant position, depending on the needs of each case. Each offset requires different drill lengths.

Drill diameter: 2/ 2,5/ 2,8/ 3/ 3,3/ 3,6/ 3,9/ 4,2/ 4,5 (mm)

Drill Length: 6 / 8,5 / 10 / 11,5 / 13 / 16 / 19 (mm)



74.xxx.220.01-2*



74.xxx.225.01-2*



74.xxx.228.01-2*



74.xxx.230.01-2*



74.xxx.233.01-2*



74.xxx.236.01-2*



74.xxx.239.01-2*



74.xxx.242.01-2*



74.xxx.245.01-2*

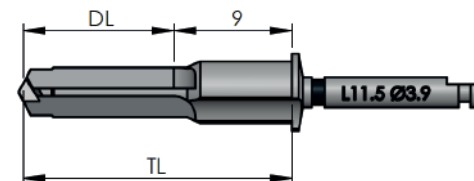


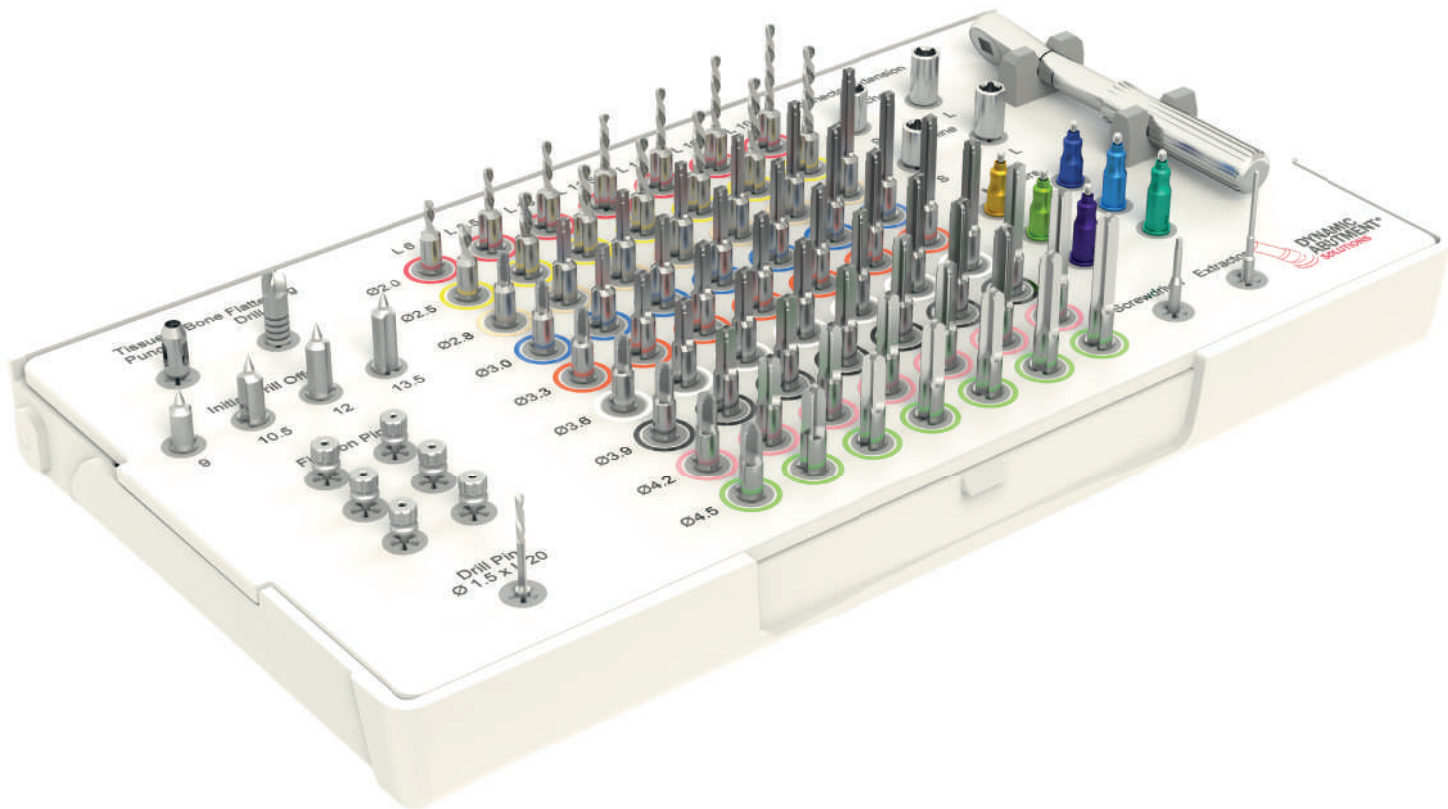
*xxx: drill length (DL)

DAS SURGICAL GUIDE KIT

| Ø DRILL | TL (Total length) | DL (Drill length) | Code |
|---------|-------------------|-------------------|-----------------|
| Ø 2.0 | 15 | 6 | 74.060.220.01-2 |
| | 17.5 | 8.5 | 74.085.220.01-2 |
| | 19 | 10 | 74.100.220.01-2 |
| | 20.5 | 11.5 | 74.115.220.01-2 |
| | 22 | 13 | 74.130.220.01-2 |
| | 25 | 16 | 74.160.220.01-2 |
| | 28 | 19 | 74.190.220.01-2 |
| Ø 2.5 | 15 | 6 | 74.060.225.01-2 |
| | 17.5 | 8.5 | 74.085.225.01-2 |
| | 19 | 10 | 74.100.225.01-2 |
| | 20.5 | 11.5 | 74.115.225.01-2 |
| | 22 | 13 | 74.130.225.01-2 |
| | 25 | 16 | 74.160.225.01-2 |
| | 28 | 19 | 74.190.225.01-2 |
| Ø 2.8 | 15 | 6 | 74.060.228.01-2 |
| | 17.5 | 8.5 | 74.085.228.01-2 |
| | 19 | 10 | 74.100.228.01-2 |
| | 20.5 | 11.5 | 74.115.228.01-2 |
| | 22 | 13 | 74.130.228.01-2 |
| | 25 | 16 | 74.160.228.01-2 |
| | 28 | 19 | 74.190.228.01-2 |
| Ø 3.0 | 15 | 6 | 74.060.230.01-2 |
| | 17.5 | 8.5 | 74.085.230.01-2 |
| | 19 | 10 | 74.100.230.01-2 |
| | 20.5 | 11.5 | 74.115.230.01-2 |
| | 22 | 13 | 74.130.230.01-2 |
| | 25 | 16 | 74.160.230.01-2 |
| | 28 | 19 | 74.190.230.01-2 |
| Ø 3.3 | 15 | 6 | 74.060.233.01-2 |
| | 17.5 | 8.5 | 74.085.233.01-2 |
| | 19 | 10 | 74.100.233.01-2 |
| | 20.5 | 11.5 | 74.115.233.01-2 |
| | 22 | 13 | 74.130.233.01-2 |
| | 25 | 16 | 74.160.233.01-2 |
| | 28 | 19 | 74.190.233.01-2 |

| Ø DRILL | TL (Total length) | DL (Drill length) | Code |
|---------|-------------------|-------------------|-----------------|
| Ø 3.6 | 15 | 6 | 74.060.236.01-2 |
| | 17.5 | 8.5 | 74.085.236.01-2 |
| | 19 | 10 | 74.100.236.01-2 |
| | 20.5 | 11.5 | 74.115.236.01-2 |
| | 22 | 13 | 74.130.236.01-2 |
| | 25 | 16 | 74.160.236.01-2 |
| | 28 | 19 | 74.190.236.01-2 |
| Ø 3.9 | 15 | 6 | 74.060.239.01-2 |
| | 17.5 | 8.5 | 74.085.239.01-2 |
| | 19 | 10 | 74.100.239.01-2 |
| | 20.5 | 11.5 | 74.115.239.01-2 |
| | 22 | 13 | 74.130.239.01-2 |
| | 25 | 16 | 74.160.239.01-2 |
| | 28 | 19 | 74.190.239.01-2 |
| Ø 4.2 | 15 | 6 | 74.060.242.01-2 |
| | 17.5 | 8.5 | 74.085.242.01-2 |
| | 19 | 10 | 74.100.242.01-2 |
| | 20.5 | 11.5 | 74.115.242.01-2 |
| | 22 | 13 | 74.130.242.01-2 |
| | 25 | 16 | 74.160.242.01-2 |
| | 28 | 19 | 74.190.242.01-2 |
| Ø 4.5 | 15 | 6 | 74.060.245.01-2 |
| | 17.5 | 8.5 | 74.085.245.01-2 |
| | 19 | 10 | 74.100.245.01-2 |
| | 20.5 | 11.5 | 74.115.245.01-2 |
| | 22 | 13 | 74.130.245.01-2 |
| | 25 | 16 | 74.160.245.01-2 |
| | 28 | 19 | 74.190.245.01-2 |







KIT COMPONENTS

ANCHOR DRILL AND PIN



Anchor Pin

79.300.004.01-2

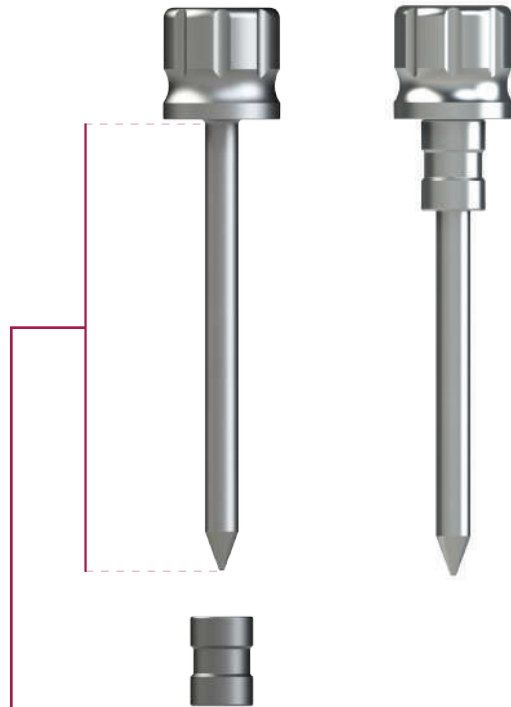
The fixation pin fixes the surgical **guide into position**.
The pin must be pushed all the way along the sleeve.



Anchor Drill

74.200.215.01-2

The drill pin **cuts at the tip and is beveled at the edges**.
The drill should pass completely through the sleeve to guarantee that the pin grips firmly.



One **single anchor** pin $\text{\O}1,5\text{mm}$ with length 20mm.

Anchor Pin

79.300.004.01-2

The fixation pin fixes the surgical **guide into position**. The pin must be pushed all the way along the sleeve.

One single inner sleeve of $\text{\O}1,5\text{ mm}$ diameter



DAS Anchor Sleeve

71.340.153.01-2

Cylindrical pieces that are incorporated to the ferule to allow the **placement** of the anchor pins.



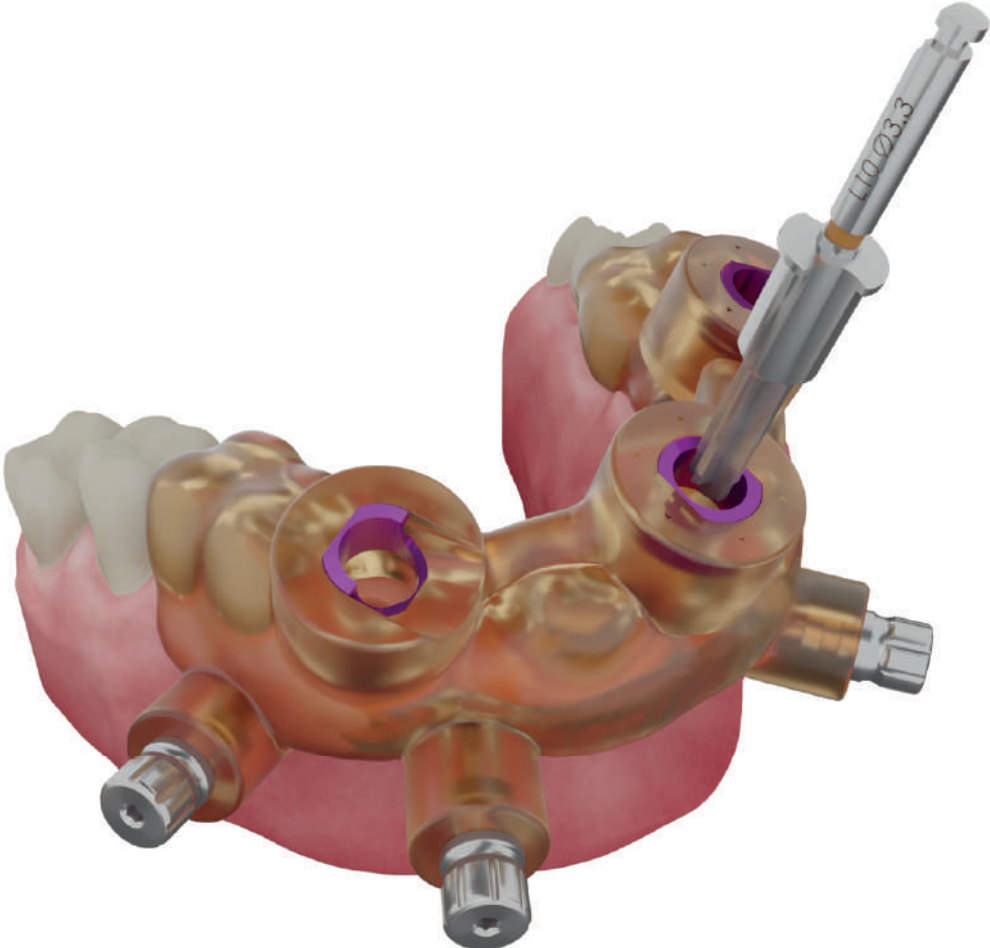
Anchor Drill

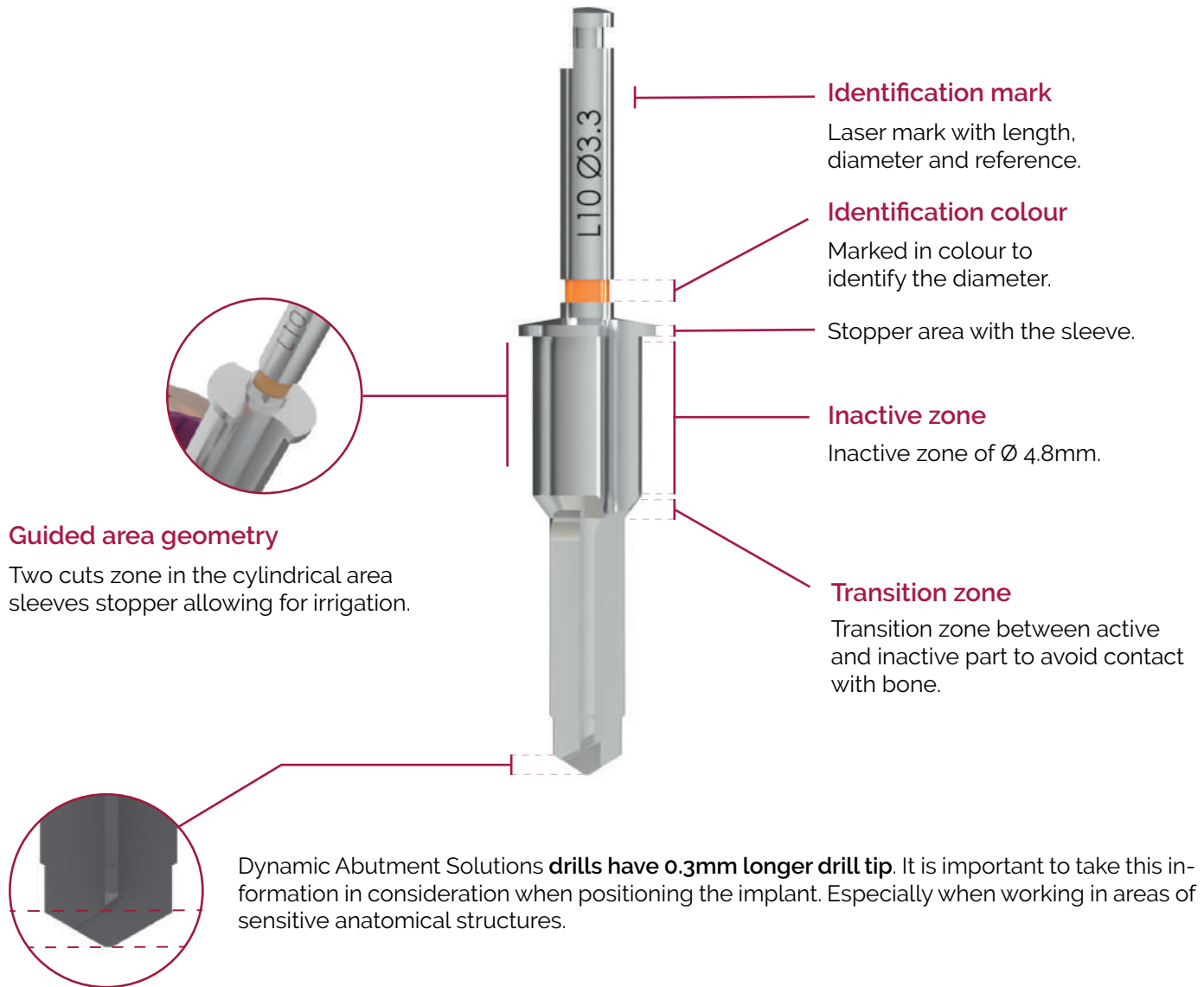
74.200.215.01-2

The fixation drill pins cuts at the tip and is beveled at the edges. The drill should pass **completely through the sleeve** to guarantee that the pin grips firmly.

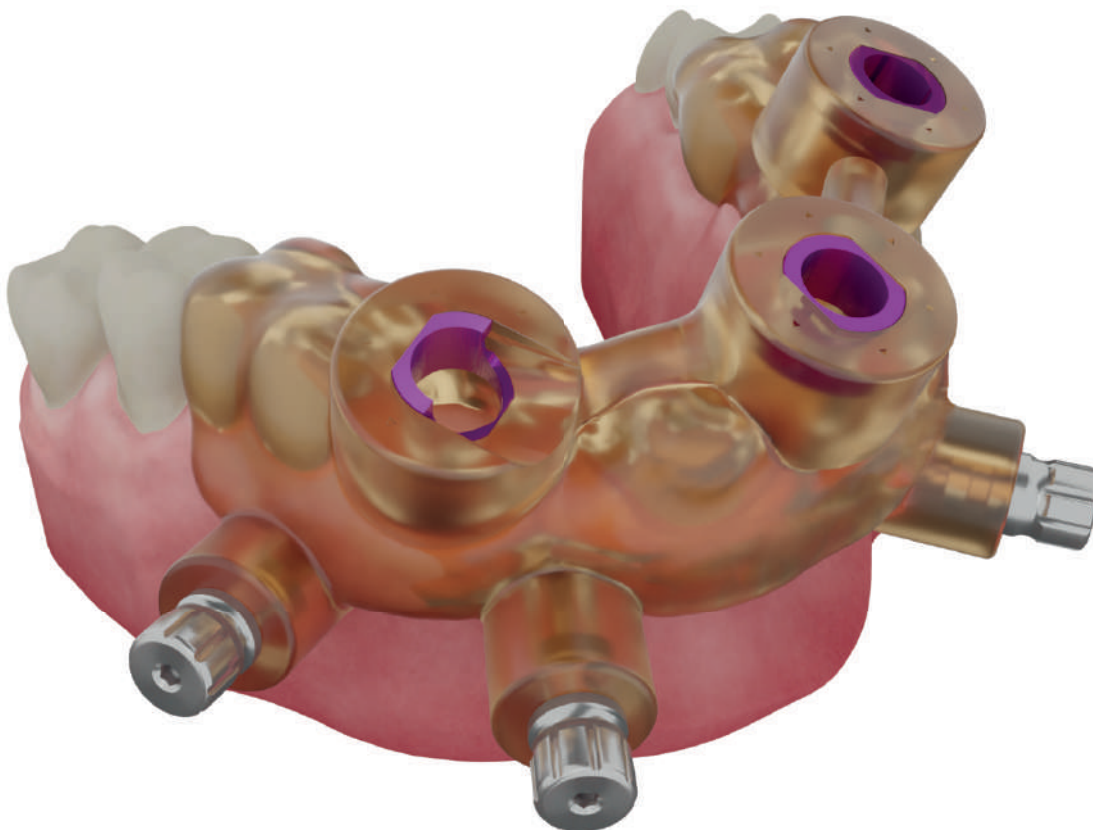
One single drill with L20 mm and $\text{\O}1,5\text{ mm}$

DRILLS





SLEEVES

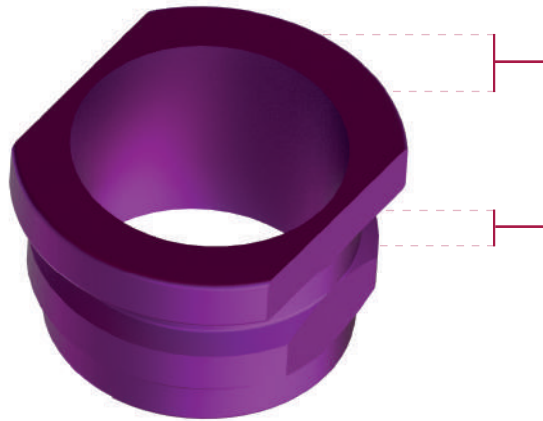


SLEEVE: ONE SINGLE SLEEVE FOR ALL IMPLANT SYSTEMS

DAS Sleeve

71.340.485.01-2

Once fixed to the surgical guide, it allows the guided **drilling sequence** and **the placement of the implant** in the planned position.



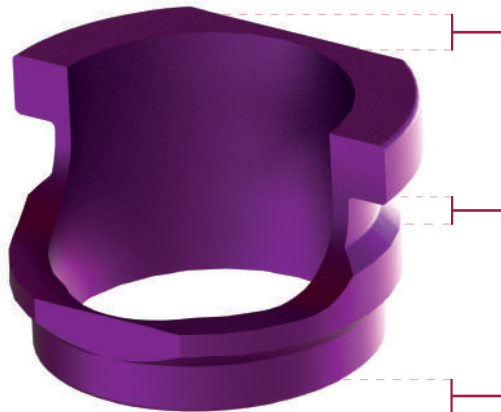
Inner diameter according to the drills and implant mounts.

Two **lateral cuts** to fix the sleeve in one position and reference the direction of the implant connection.

DAS Cut Sleeve

71.340.485.02-2

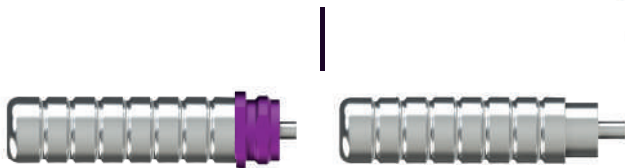
The cut sleeve provides a mesial access to aid when there is difficulty in inserting the drills from above. The lateral opening allows for an easier access in areas where the length of the drills would be a hindrance. Thanks to the lateral opening, which is also printed in the guide, **it is possible to pass the drills laterally.**



Inner diameter according to drills and implant mounts.

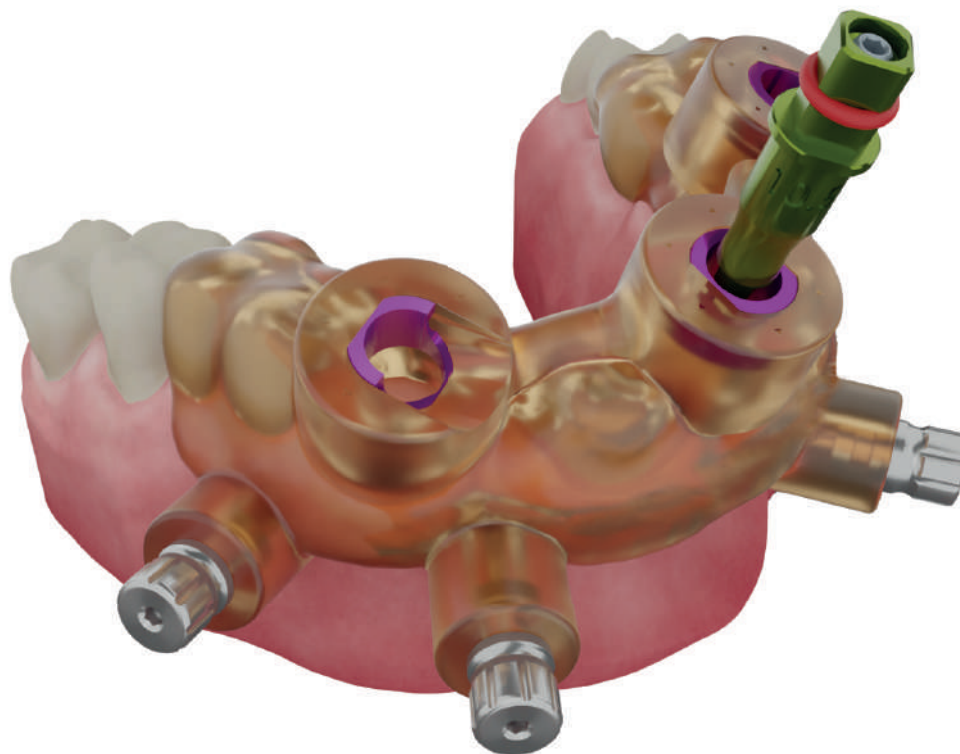
Two **lateral cuts** to fix the sleeve in one position and reference the direction of the implant connection.

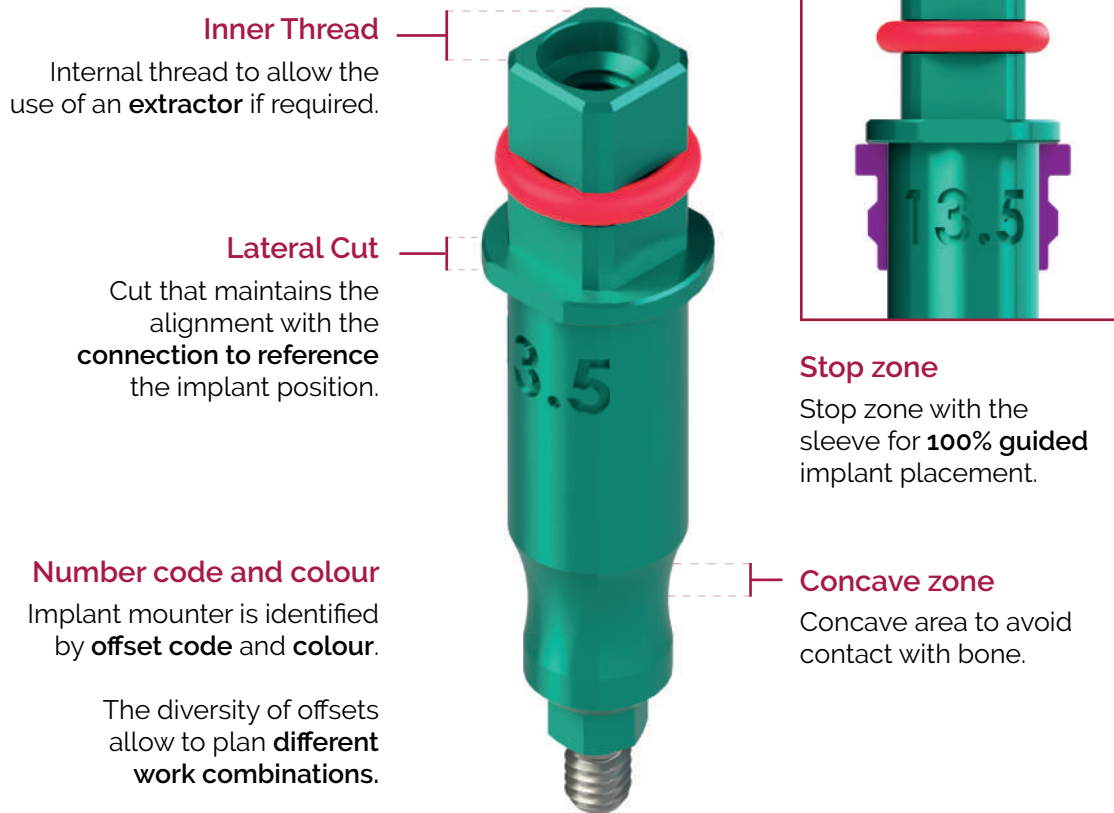
Lateral access provides additional convenience and facilitates guided surgery in cases with limited space.



*Use the Dynamic Abutment Solution Sleeve Gripper (79.300.003.02-2) to insert the sleeve into the surgical guide.

IMPLANT MOUNTER





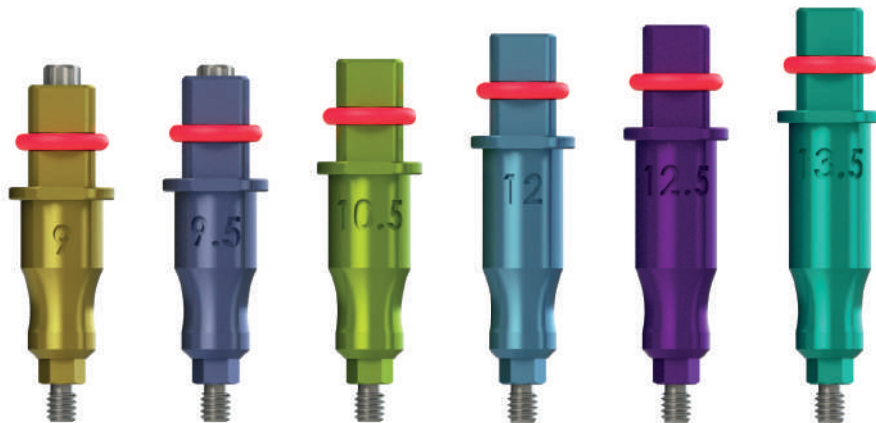
Implant mouter

The implant mouter connects to the implant by means of the **clamping screw** and goes in the direction and to the depth of the implant through the surgical guide.

Thanks to the lateral cuts of the stop zone on the implant mouter you can also check the position of the connection of the implant through the surgical guide.

Available different offsets

Check the "work offsets by compatibility" document to find in the information in the Dynamic Abutment Solutions catalogue.



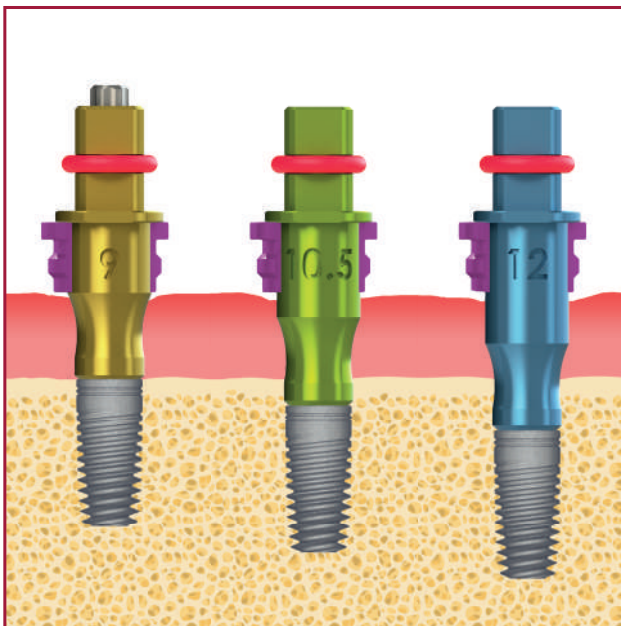
*Example: Alphabio Internal Hex

Implant mouter colours according to offset

| |
|------|
| 9 |
| 9,5 |
| 10 |
| 10,5 |
| 11 |
| 11,5 |
| 12 |
| 12,5 |
| 13 |
| 13,5 |

The implant mouter is anodised according to the offset to facilitate its identification in surgery.

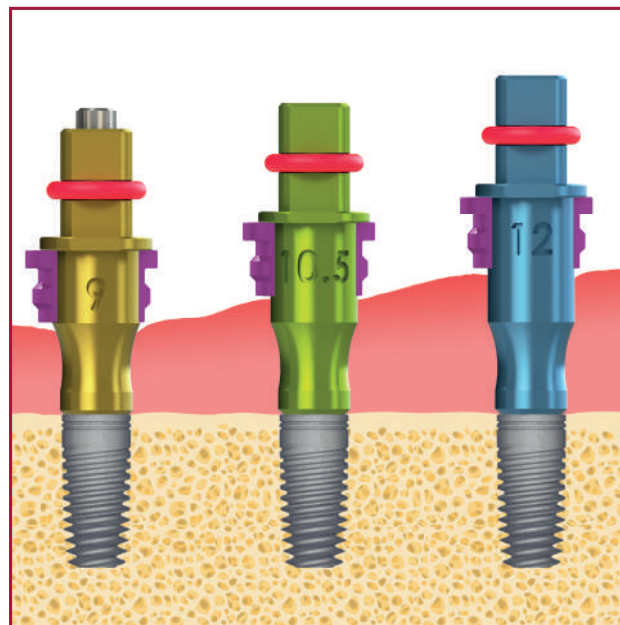
IMPLANT MOUNTER



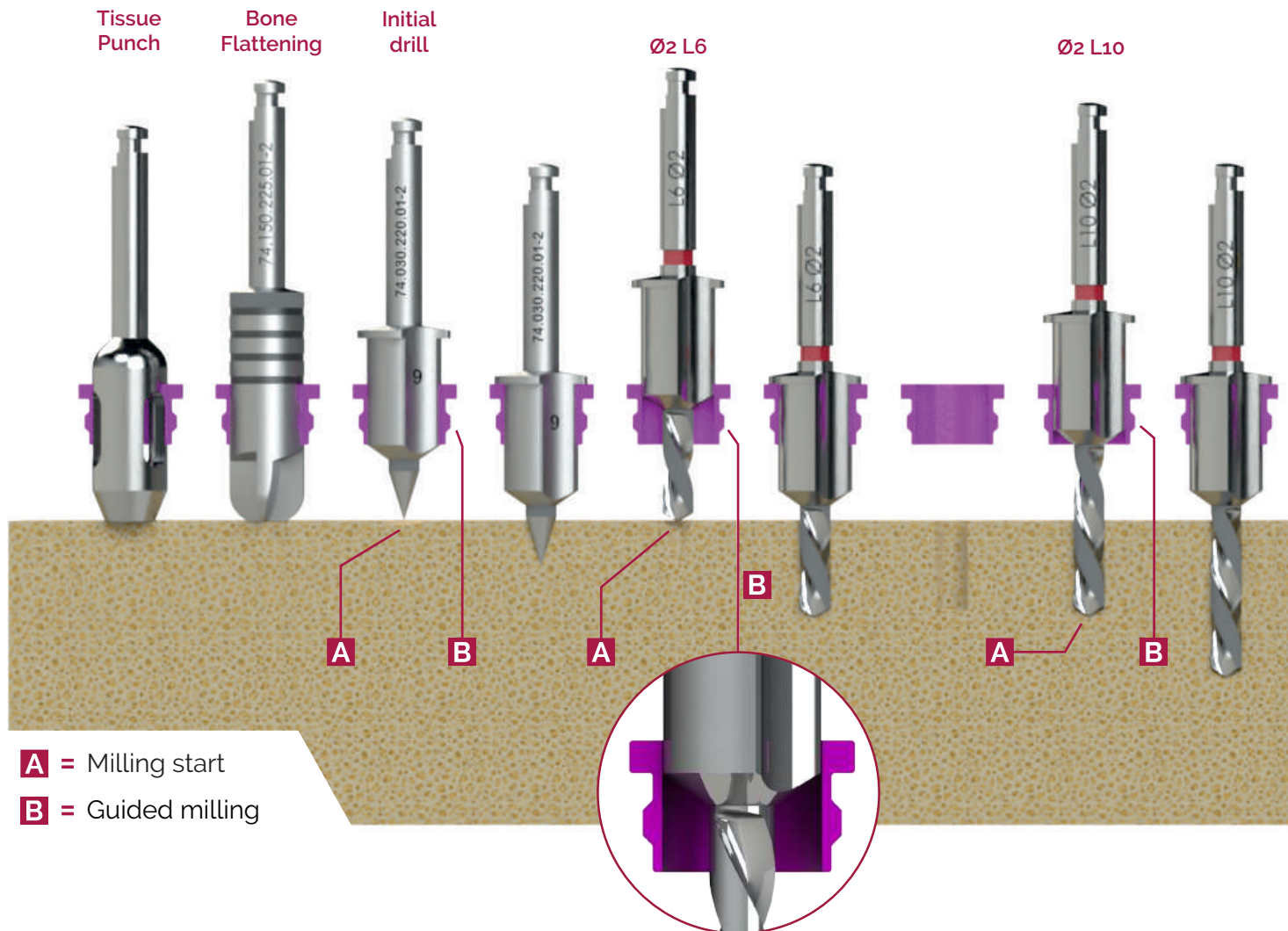
*Example of Alphabio Internal hex - Implant length 10mm

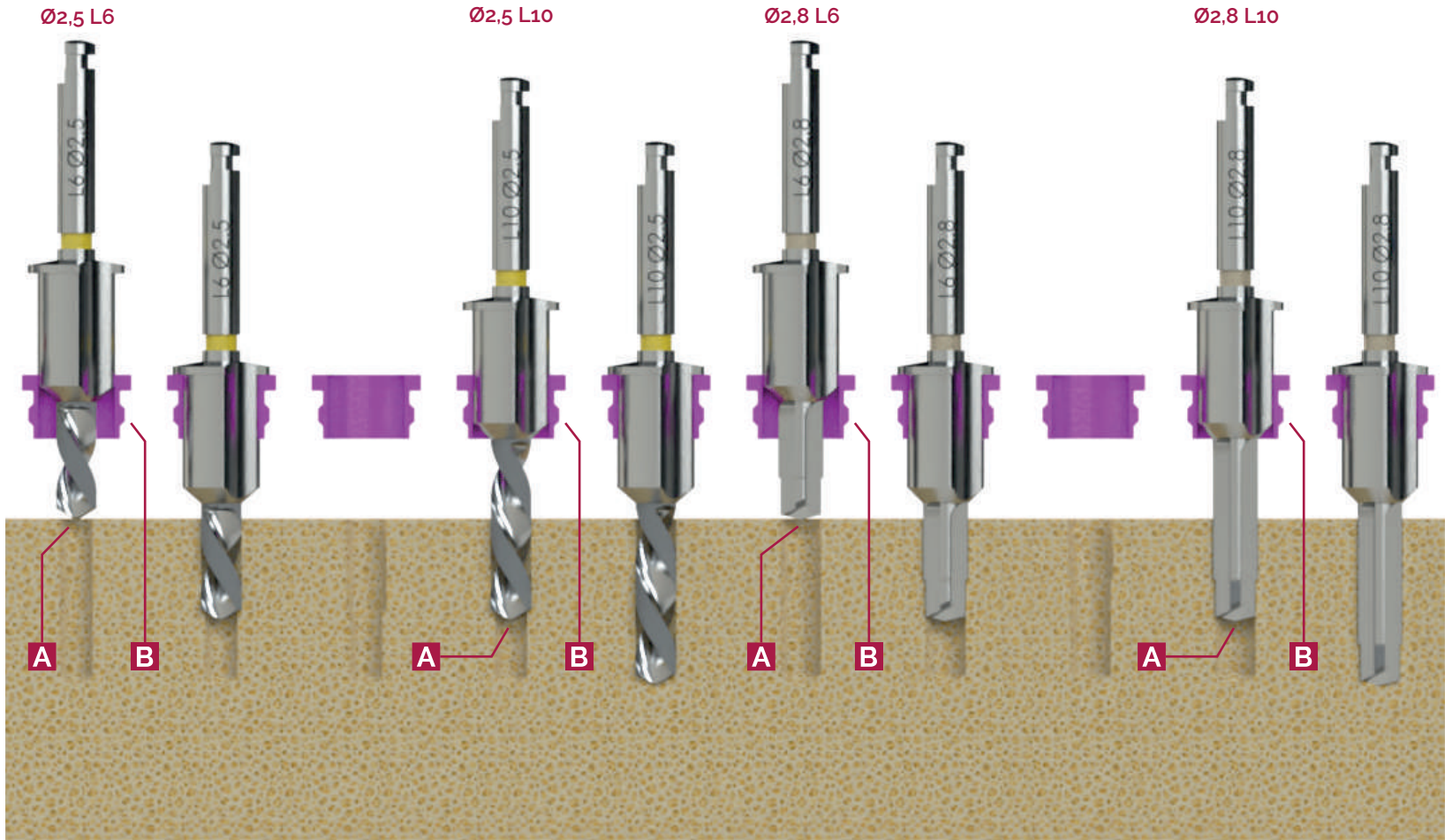
Different offsets available

Each implant has different working offsets so that the sleeves can be placed on the implant in the desired working position.



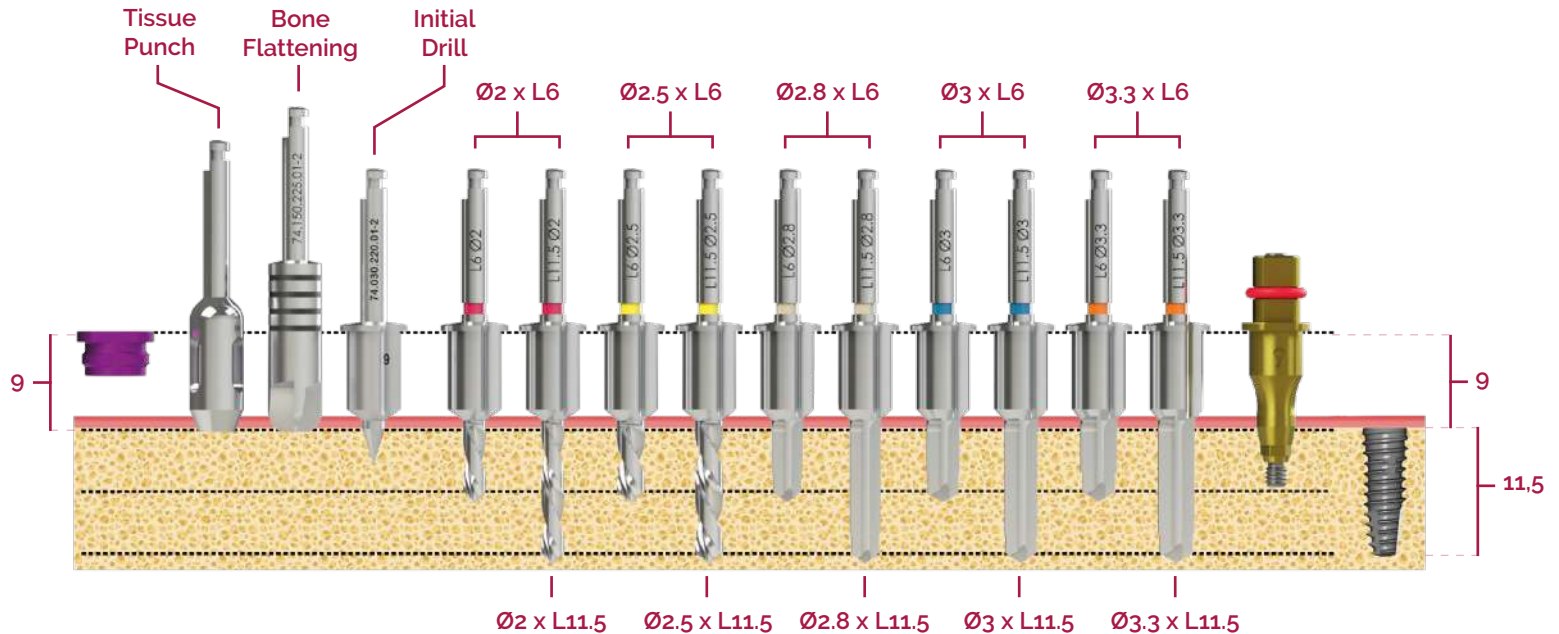
100% GUIDED SURGERY PROCESS





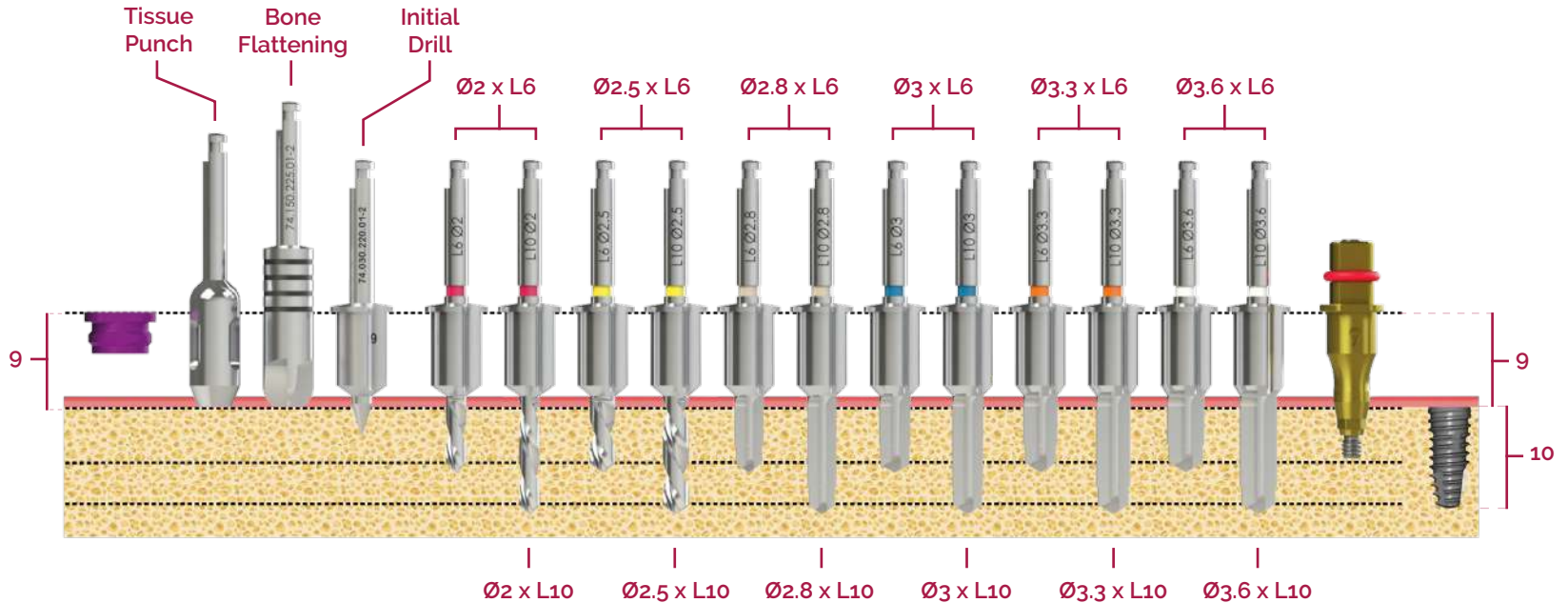
DRILL SEQUENCE EXAMPLE

Drills sequence for Bone Level implant $\text{Ø}3.5 \times \text{L}11.5$



Depending on **the bone density** (detectable even through the diagnostics software functions), the Doctor may decide on the diameter of the final drill, based on his own **clinical experience** and depending on the **geometry of the implant**, for a possible under-preparation of the surgical site in order to **increase the stability** of the implant

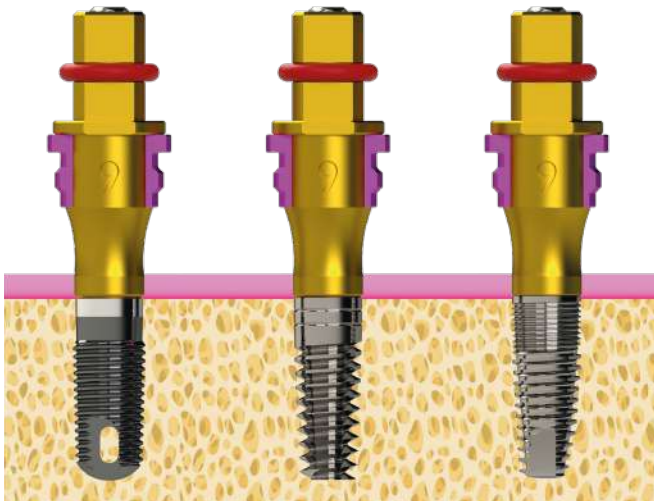
Drills sequence for Bone Level implant $\varnothing 4.0 \times L10$



Depending on **the bone density** (detectable even through the diagnostics software functions), the Doctor may decide on the diameter of the final drill, based on his own **clinical experience** and depending on the **geometry of the implant**, for a possible under-preparation of the surgical site in order to **increase the stability** of the implant

SAME CONNECTION, DIFFERENT IMPLANT MOUNTER

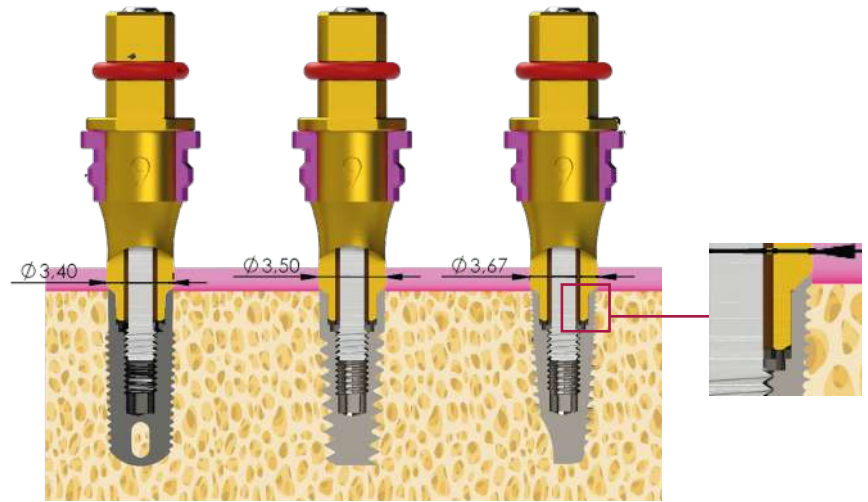
*An example using Internal Hexagon compatible with 0040



**ZIMMER
SCREW/VENT**
3,5

**ALPHABIO
DFI**
3,3

**CORTEX
CLASSIX**
3,8



**ZIMMER
SCREW/VENT**
3,5

**ALPHABIO
DFI**
3,3

**CORTEX
CLASSIX**
3,8

Zimmer implant mount with:

ZIMMER
ALPHABIO
CORTEX

Same internal hexagon
Same connection

The same mouter is simulated for each implant.

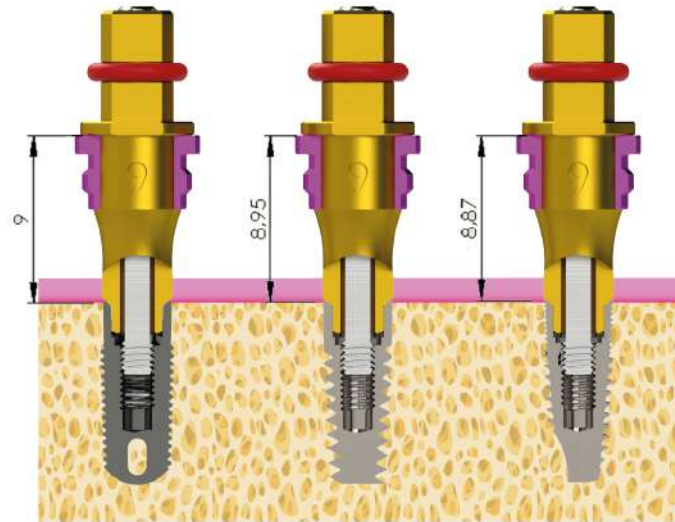
ZIMMER
ALPHABIO
CORTEX

Closing of each implant
mouter is different

Offset gmm → ZIMMER

OK
Planification
Final execution

SAME CONNECTION, DIFFERENT IMPLANT MOUNTER



ZIMMER
SCREWVENT
3,5

ALPHABIO
DFI
3,3

CORTEX
CLASSIX
3,8



When the closing is different → Each implant requires a different mouter.

EXTENSORS



Short & Long Extensor for Ratchet

79.600.009.01-2 (short)
79.600.010.01-2 (large)

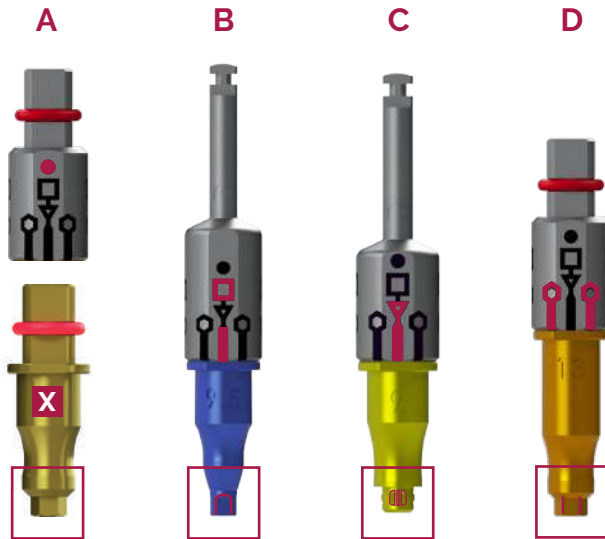
Extension for connection between the torque wrench and the implant mounter.



Short & Long Extensor for Machine

79.300.007.01-2 (short)
79.300.008.01-2 (large)

Connector for guiding the implant mounter with surgical hand piece.



The face of the extensor engraved with a dot (A) must align with the face of the mount engraved with the offset number (X).

4 Face connection: the engraving (B) on the extensor. This indicates the position of the 4 faces of the implant connection.

3 Face connection: the engraving (C) on the extensor. This indicates the position of the 3 faces of the implant connection.

6 Face connection: the engraving (D) on the extensor. This indicates the position of the 6 edges of the implant connection.

SCREWDRIVER & EXTRACTOR



Screwdriver Hex.1,2

43.601.103.02-2

Screwdriver to tighten the screw of the implant mount and other screws Hex. 1.20 mm



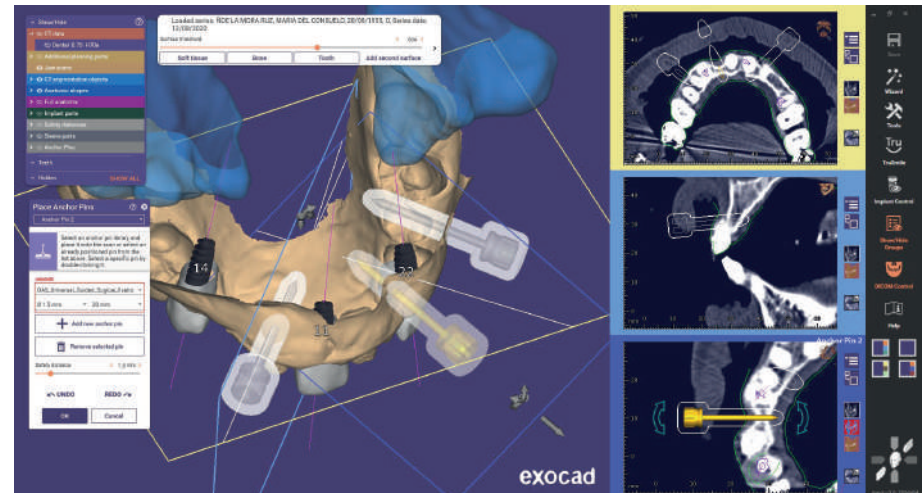
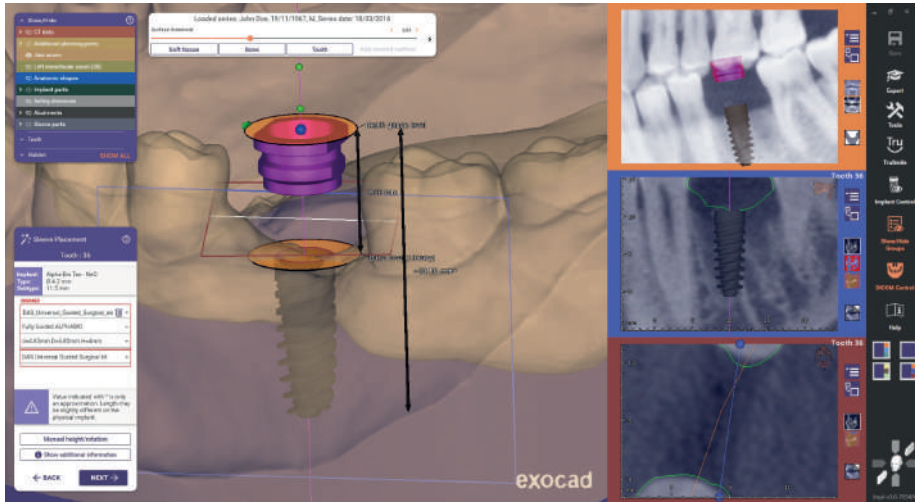
Extractor

79.300.001.01-2

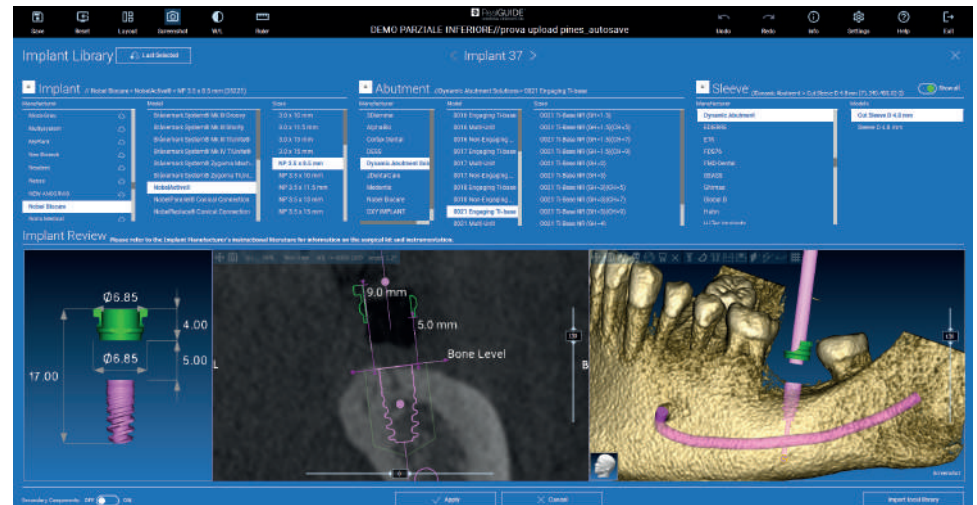
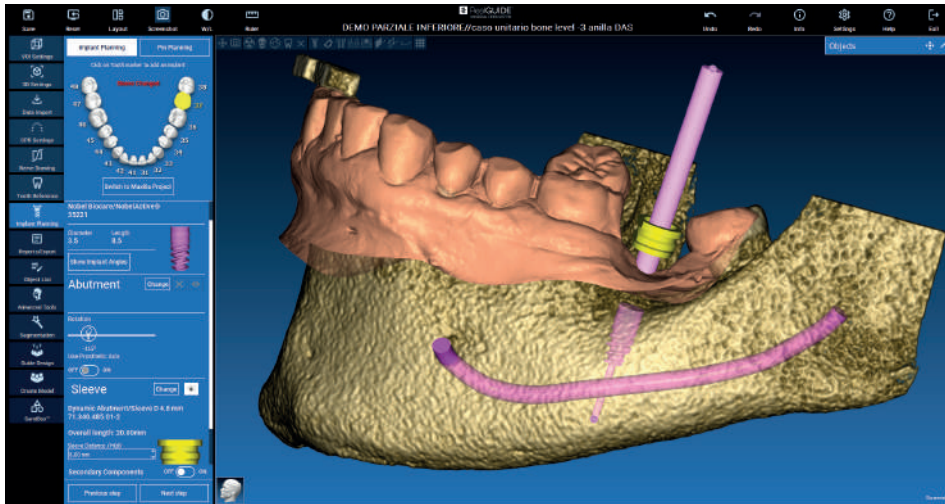
This tool is to be used to separate the implant mount in cases when it becomes lodged using the following instructions:

- Unscrew the implant mount screw and remove.
- Screw the extractor into the implant mount in order to release the implant mount from the implant.

LIBRARIES

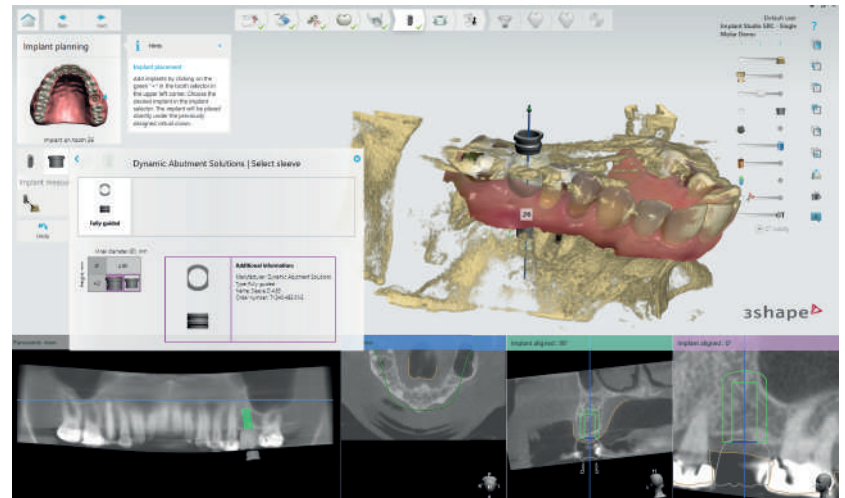
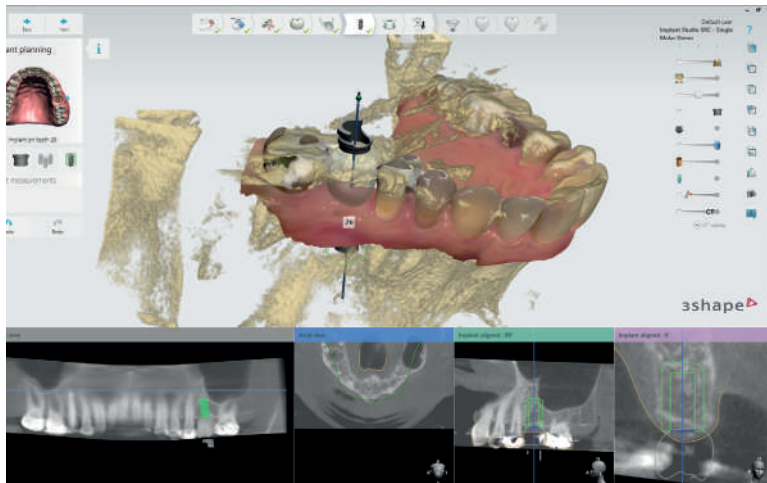


Request libraries: das@dynamicabutment.com
usa@dynamicabutment.com



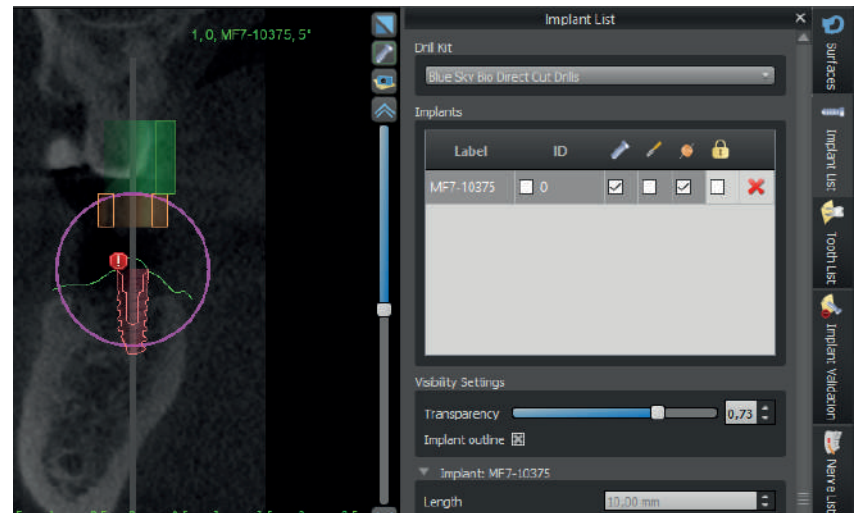
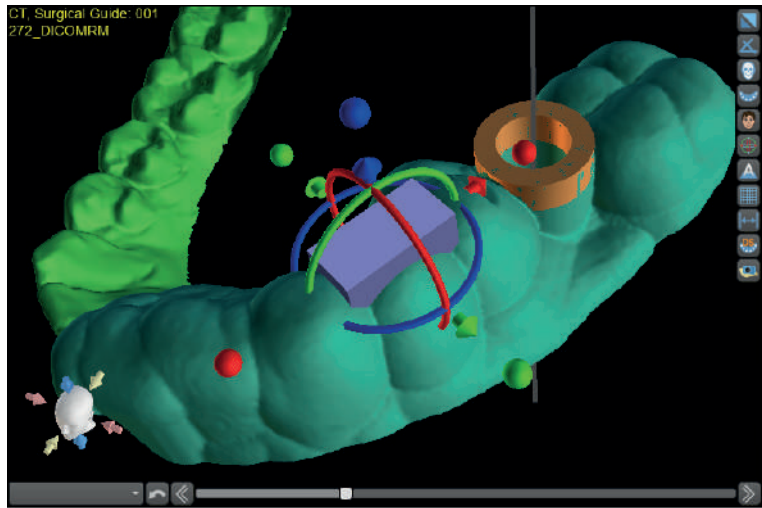
Request libraries: das@dynamicabutment.com
usa@dynamicabutment.com

3shape Implant Studio



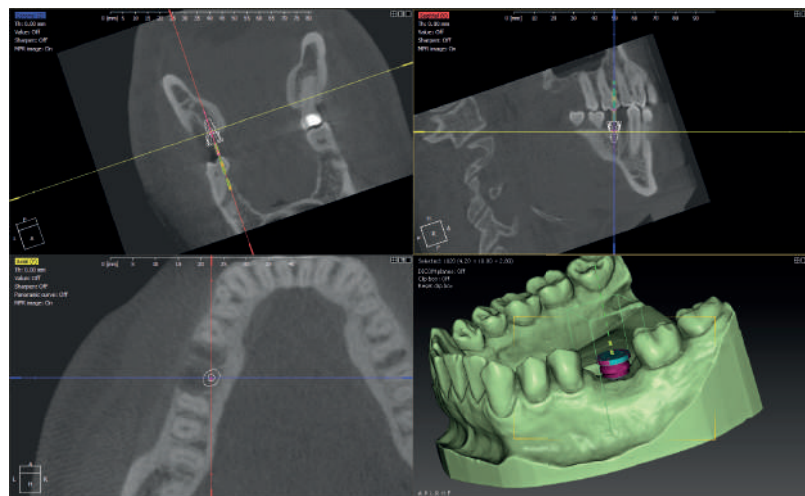
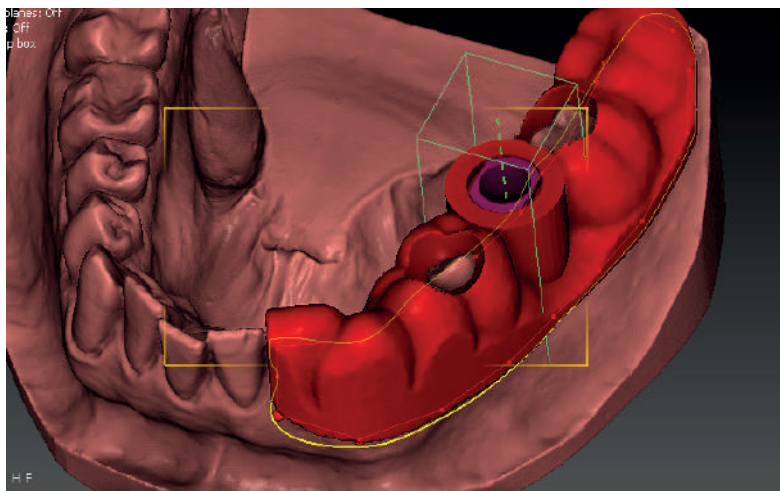
Request libraries: das@dynamicabutment.com
usa@dynamicabutment.com

LIBRARIES



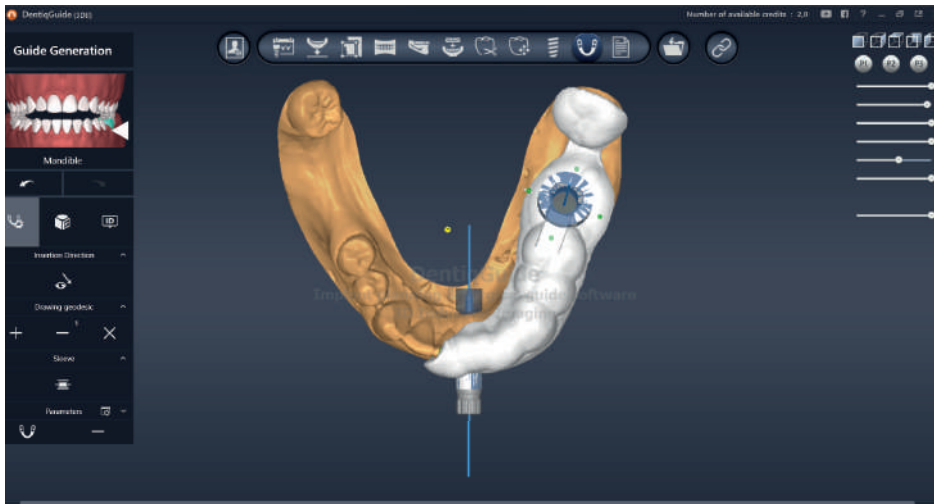
Request libraries: das@dynamicabutment.com
usa@dynamicabutment.com

LIBRARIES



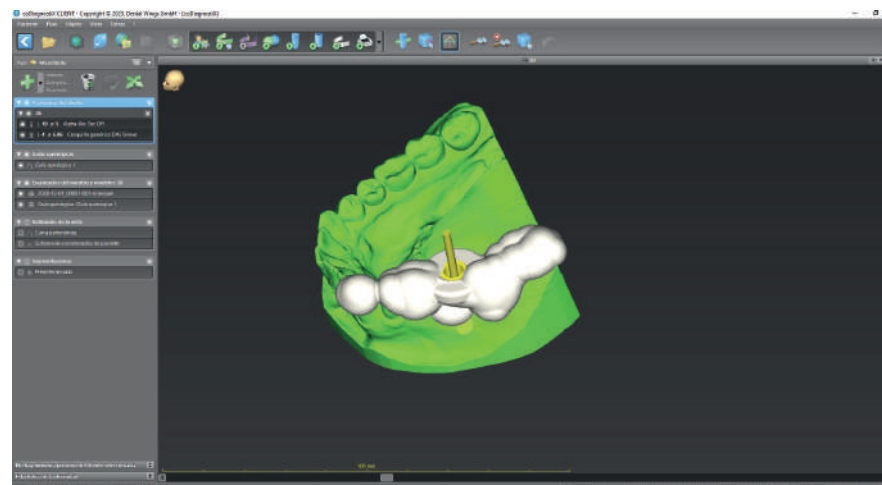
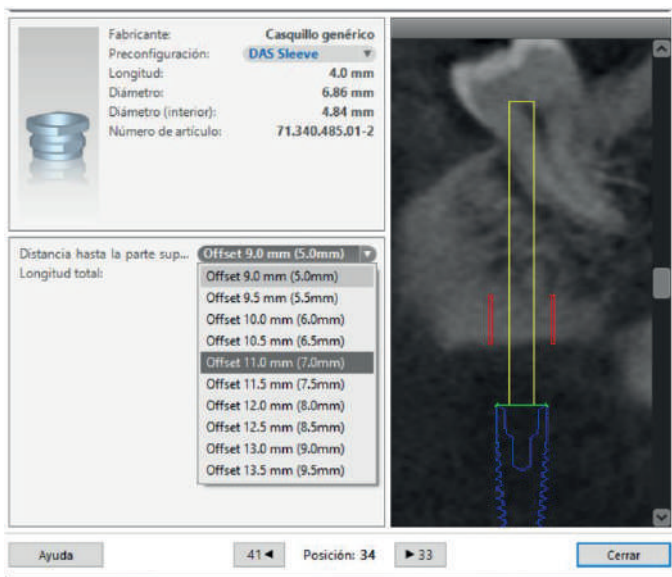
Request libraries: das@dynamicabutment.com
usa@dynamicabutment.com

LIBRARIES



Request libraries: das@dynamicabutment.com
usa@dynamicabutment.com

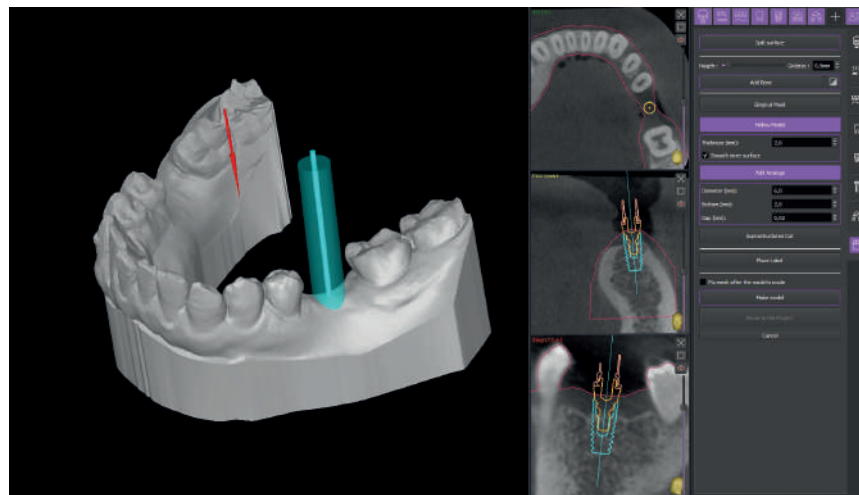




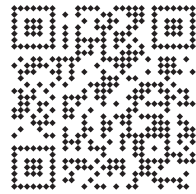
Request libraries: das@dynamicabutment.com
usa@dynamicabutment.com



ImplaStation



Request libraries: das@dynamicabutment.com
usa@dynamicabutment.com



This printed version is probably
outdated and may not include all
products or compatibilities.

**Scan and download the
latest version of this catalogue**

www.dynamicabutment.com



Virginia Woolf, 17
25005 · Lleida (Spain)

INTERNATIONAL +34 873 450 709
das@dynamicabutment.com

USA +34 873 450 707
usa@dynamicabutment.com

SPAIN +34 973 289 580
spain@dynamicabutment.com



www.dynamicabutment.com

